



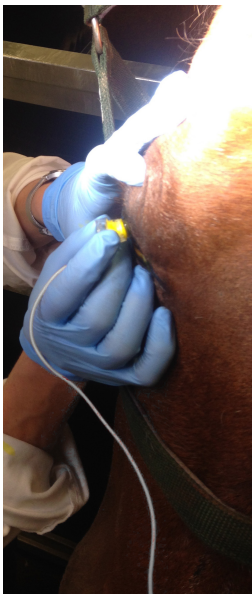
IONTOFOR-VET is an administration set designed to deliver products into the corneal stroma with IONTOPHORESIS in only 5 minutes.



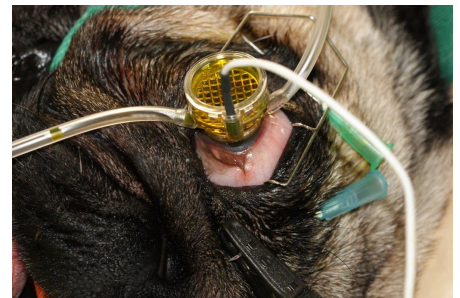
RIBOVET (Riboflavine 0,1%)  
&  
IONTOFOR-VET Electrode



ION-CXL generator



- ✓ Short Anesthesia time
- ✓ Totally Non-invasive
- ✓ Save Doctor's time
- ✓ Less prescriptions
- ✓ Improved compliance



OPIA Technologies – 17 rue Moreau - 75012 Paris – France - [www.opiatech.com](http://www.opiatech.com)  
IONTOFOR-VET, IONTOFOR\_VET Electrode, ION-CXL and FOAM inserts are for veterinary use only.  
Consult instruction for use.

Images courtesy of Dr Vet Frank Famose & Dr Vet Marc Verneuil

**Ordering Information**

Website: [www.iontoforvet.com](http://www.iontoforvet.com) – Information and Order: [sales@opiatech.com](mailto:sales@opiatech.com)

### What is IONTOFOR-VET Electrode ?

IONTOFOR-VET is a medical device for the transepithelial delivery of Intravenous (I.V.) products into the cornea stroma by IONTOPHORESIS.

IONTOPHORESIS is a process which increases the penetration of a charged substance into or through a tissue by application of a low intensity electric field.

IONTOFOR-VET is a corneal applicator with an electrode that enables the rapid passage of products into the corneal stroma by application of a low intensity electric field (Iontophoresis).

IONTOFOR-VET Electrode is connected to the electrical generator ION-CXL.

Mild electric current (1 mA) is applied for 5 minutes.

### What is IONTOFOR-VET for PACK-CXL ?

IONTOFOR-VET is a medical device for the transepithelial delivery of Riboflavin (0.1%) in the cornea by IONTOPHORESIS.

PACK-CXL stands for "Photo-Activated Chromophores for Keratitis" and CXL stands for Cross-Linking.

Riboflavin is a chromophore photo-activated in-situ with UV-A at 365 nm wavelength from a UV source.

Once photo-activated with UV-A light, Riboflavin acts as a disinfectant, with pathogen's nucleic acid damage and creation of massive amounts of reactive oxygen species, reducing the pathogen load.

Riboflavin also changes the structure of collagen fibers, reducing collagenase.

### Which equipment is needed for IONTOPHORESIS ?

OPIA Technologies supplies IONTOFOR-VET Electrode, a sterile corneal iontophoresis applicator (products to deliver not included) or IONTOFOR-VET kit that includes the Electrode and a RIBOVET vial (0.1% Riboflavin solution) for PACK-CXL procedures.

OPIA Technologies also supplies ION-CXL, a reusable generator delivering 1 mA during 5 minutes.

In option, OPIA Technologies supplies FOAM Insert, an accessory useful for the treatment of standing animals, fragile corneas or extended lesions.

A UV-A source delivering a total dose of energy of 5,4 J/cm<sup>2</sup> is needed to activate in-situ the Riboflavin (not supplied by OPIA Technologies).

### Which products can be delivered by IONTOPHORESIS?

IONTOFOR-VET electrode can be supplied alone for the administration of products listed below (products not supplied, I.V. presentations mandatory) or in a kit with Riboflavin (formulated for Iontophoresis).

**Negatively** charged products (use **black** ION-CXL lead):

Antibiotics	- Ceftazidime - Cefazolin - Tobramycin
Antivirals	- Foscarnet - Ganciclovir
Anti-inflammatories	- Dexamethasone - Methylprednisolone - Aspirin
Immunosuppressant	- Methotrexate
CXL Agent	- Riboflavine

**Positively** charged products (use **red** ION-CXL lead):

Antibiotics	- Vancomycin - Amikacin - Gentamicin - Ciprofloxacin - Ticarcillin
Antifungals	- Ketoconazole - Miconazole

### IONTOFOR-VET Electrode characteristics

Diameter	9 mm
Surface	0,64 cm <sup>2</sup>
Volume	Min. 1 ml - Max. 2 ml